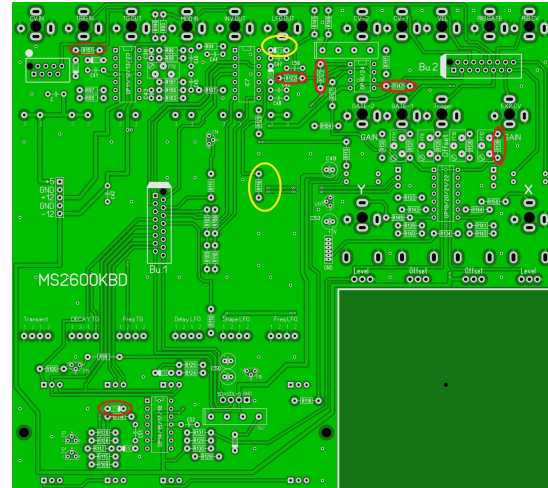
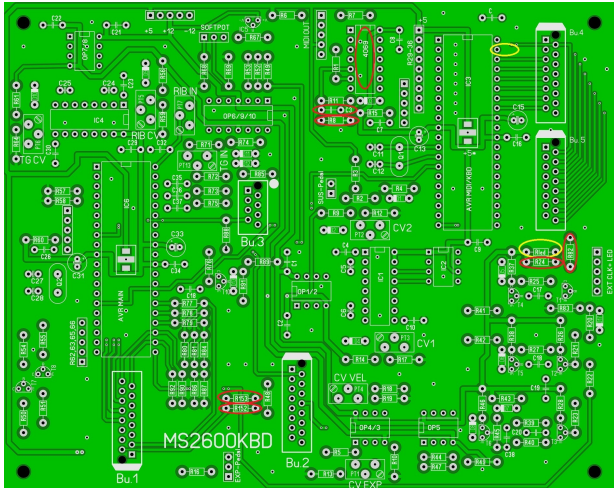
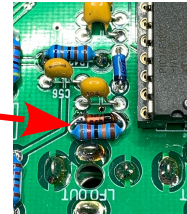


# MS2600KBD - Änderungen Stand 21.12.2020



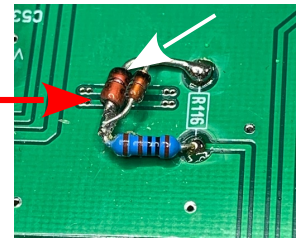
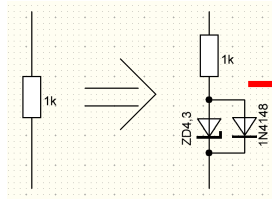
## Optimierung am LFO:

- R154 = 820k neuer R parallel zu D14
- R122 = 6,8k ( alt 10k )
- R121 = 47k (alt 50k)
- R147 = 200k (alt 240k)
- MPneu OP16/PIN1 = 0,45V bis 5,1V



R116 wird ersetzt durch folgende Schaltung

- R116 = 1k
- D27 Z-Diode = ZD4,3V
- D28 Diode = BAT46 / 1N4148 / 1N914



D15 = ZD6,2V ( alt 5,1V )

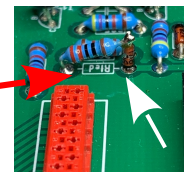
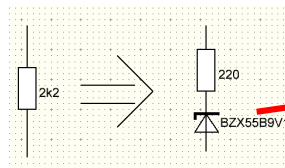
## Bugfix MIDI OUT + LED:

- INV1-4 = 74AC04 ( alt 4069 )
- C3 = 10n ( alt 100n )
- R8 = 2M2 ( alt 470k )

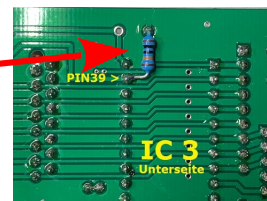
## Bugfix EXT.-CLK IN:

R<sub>led</sub> wird ersetzt durch folgende Schaltung

- R<sub>led</sub> = 220
- D29 Z-Diode = BZX55B9V1



- R24 = 22k (alt 47k)
- R82 = 22k (alt 47k)
- R155 = 100k ( neuer R von IC3-PIN39 nach GND )



## Optimierung Abgleich X-Joystick:

- R138 = 33k (alt 47k )

## Bugfix Trigger:

- R151 = 22k ( alt 4,7k )
- R152 und R153 = 33k ( alt 4,7k )